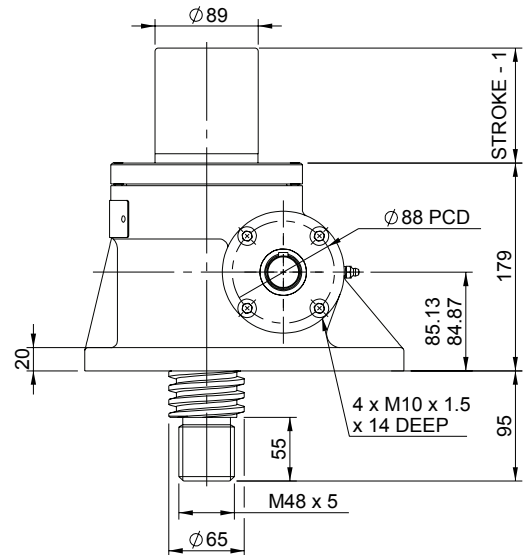
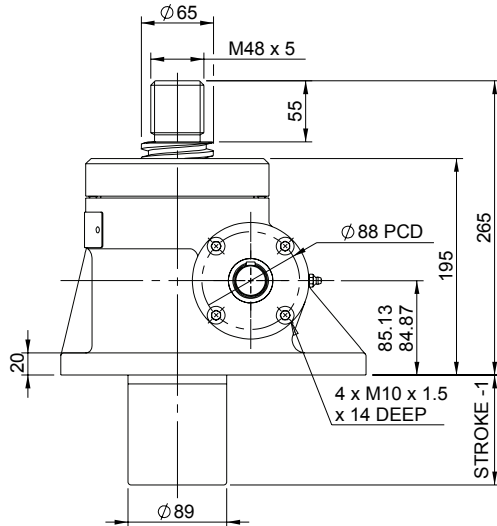
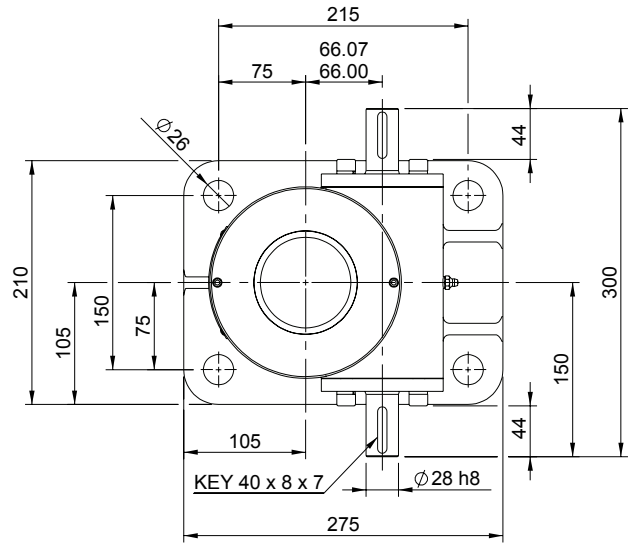
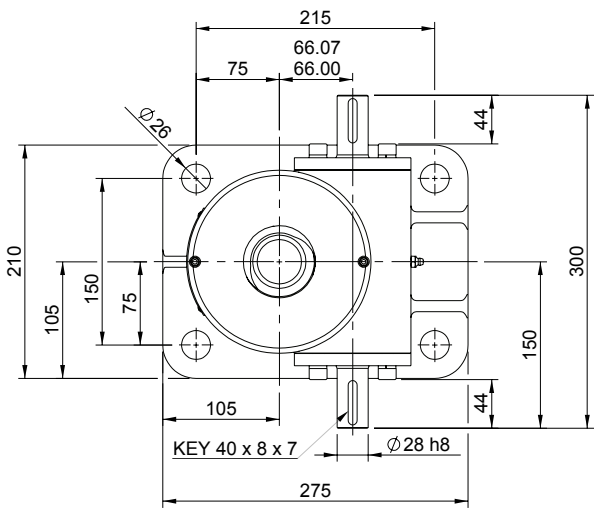


Aufrecht EMT0200-U00

Invertiert EMT0200-I00



EMT0200-U00

Minimales Einbaumaß



Translierende Spindel-Ausführung

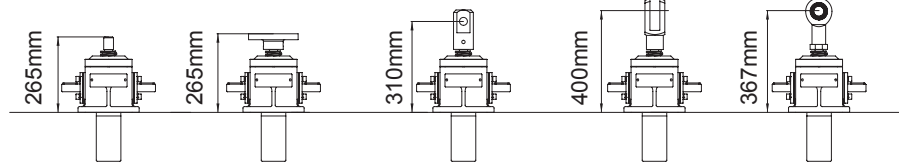
EMR0200-U00



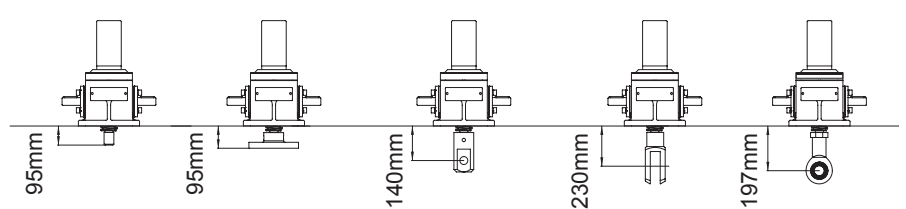
Rotierende Spindel-Ausführung

Gewindeende    Kopfplatte    Gelenkkopf    Gabelkopf    Stangenende

Aufrecht



Umgekehrt



Gewindeende    Kopfplatte    Gelenkkopf    Gabelkopf    Stangenende

