



# Load Cell Displays

## Handheld Display

Advanced handheld displays with models that allow up to 12 load monitoring devices to be displayed on one unit



Wireless



Cabled

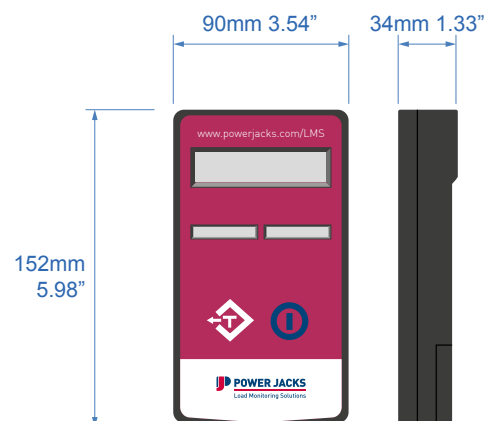
## Features

- Matched with Power Jacks Load Monitoring Solutions.
- Simple to use keypad with multidigit 9mm LCD display.
- Handheld display options that allow up to 12 wireless load monitoring devices to be linked to one display for individual or summed load values.
- Calibrated in Tonne with kg resolution accuracy (alternative weighing units on request e.g. kg, kN, lb, Ton).
- Tare function.
- Fully configured and calibrated for your application.
- Sleep / Wake acquisition modules.
- Very low power consumption for long battery life.
- Auto shut down feature available on request.
- Power by 2 x AA internal batteries.
- Wireless range of 200 m (650 ft) maximum.
- Worldwide licence exempt 2.4 GHz radio.
- RS232 output available on request. Via base station for wireless displays and dual cable on cabled displays.
- Tactile keypad & Rugged construction.
- Operating Temperature -10°C to +50°C
- Relative humidity 95% non-condensing.
- Environmentally sealed to IP65.
- Carry case available on request.

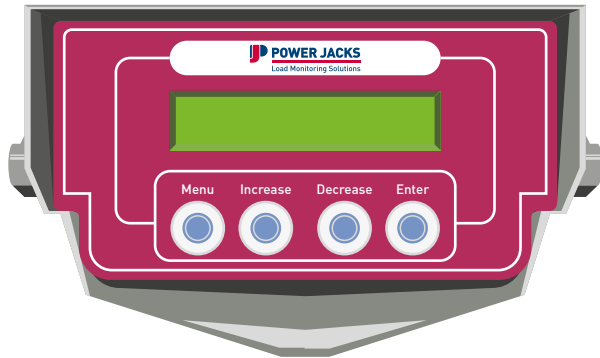
Ideal as a matched display for Power Jacks load monitoring products:

- Load Link
- Load Shackle
- Load Pin
- Compressive Load Cell

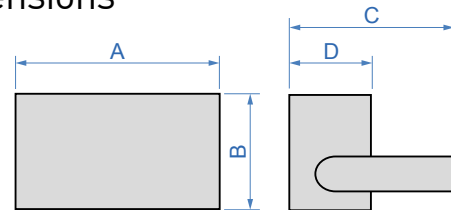
## Dimensions



# Rugged fixed display with options for ATEX rated units



## Dimensions



Dimensions (mm)	A	B	C	D
Safe Area Display	184	96	110	72
ATEX Area Display	184	240	240	110

## Features

- The display of choice for use with our Running Line Monitor.
- Simple to use keypad with multidigit LCD display.
- Calibrated in Tonne with kg resolution accuracy
- Functionality for Load, Counter, Payout and Speed.
- Polycarbonate housing with Stainless Steel frame.
- Vandal proof switches.
- 9.5mm Character LCD display.
- 110-240VAC power supply with low power consumption. DC options available on request.
- ATEX units have an internal heavy duty rechargeable battery unit.
- Fully adjustable bracket
- Full data logging available.
- Standard Enclosure IP66.
- ATEX Enclosure IP68.
- Hazardous area ATEX models available for all environments.
- Supplied fully configured and calibrated.

Ideal as a matched display for Power Jacks load monitoring products:

- Running Line Tensiometer
- Load Link
- Load Shackle
- Load Pin
- Compressive Load Cell

## Complete your system with our Data Logging solutions



- Data can be transmitted to Local PC for immediate display.
- Live logging and graph display
- User can plot graph, capture peak loads and analyse data for producing reports and presentations.
- Standard product uses discrete USB powered Base station so that no hardware installation required.

PJLMS-LCD-EN-00



Balmacassie Commercial Park  
Ellon, Aberdeenshire  
AB41 8BX  
Scotland (UK)  
Tel: +44 (0)1358 285100  
WWW.POWERJACKS.COM  
LMS@powerjacks.com



All rights reserved by Power Jacks Limited. May not be copied in whole or in part.  
© Power Jacks Limited 2015, Aberdeenshire, Scotland, United Kingdom.  
Dimensions & values subject to change without notice.