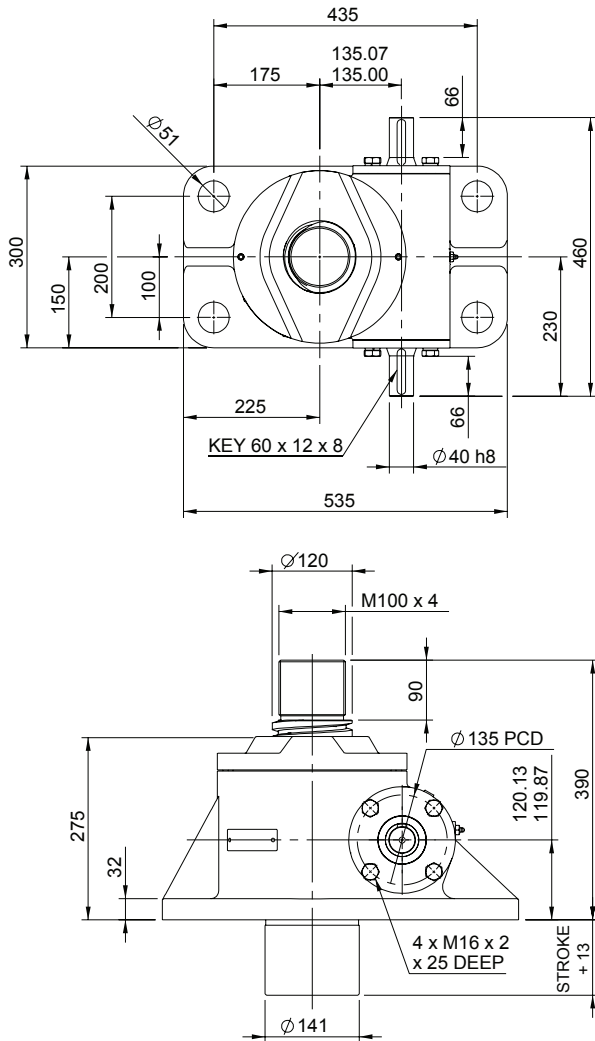
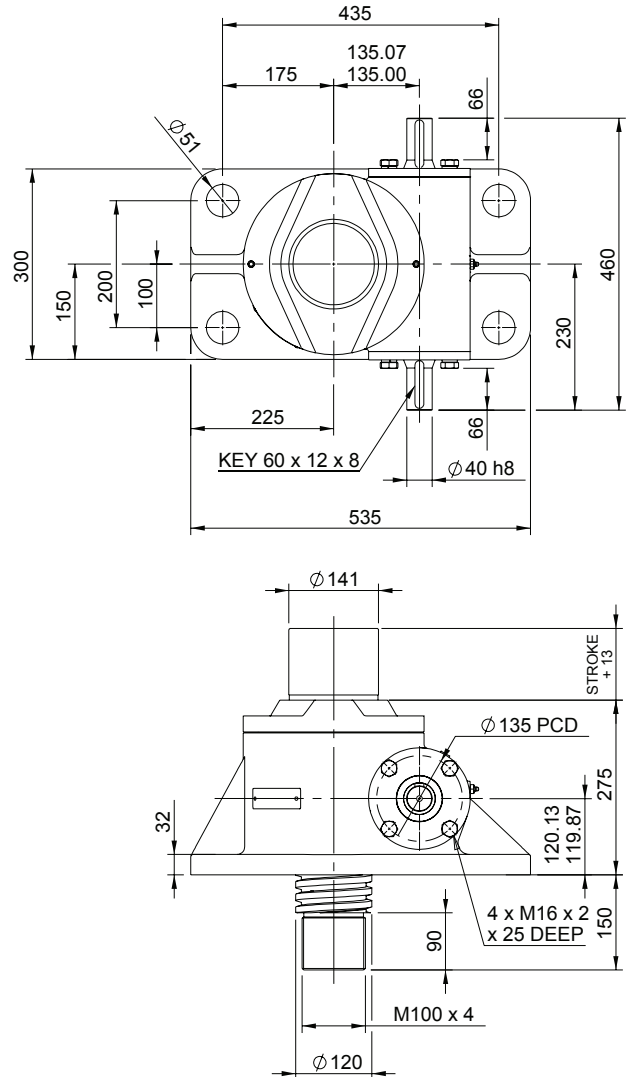


Upright EMT0500-V00



Inverted EMT0500-J00

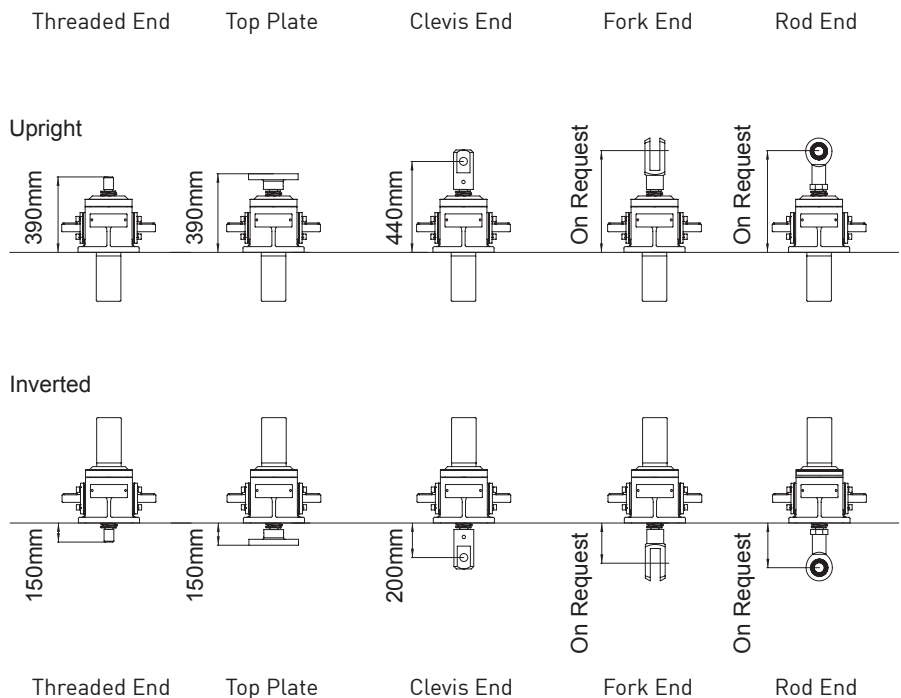


EMT0500-V00



Translating Screw

Closed Height



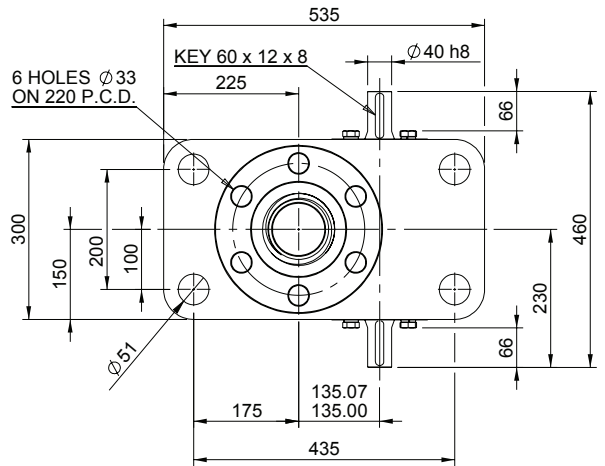
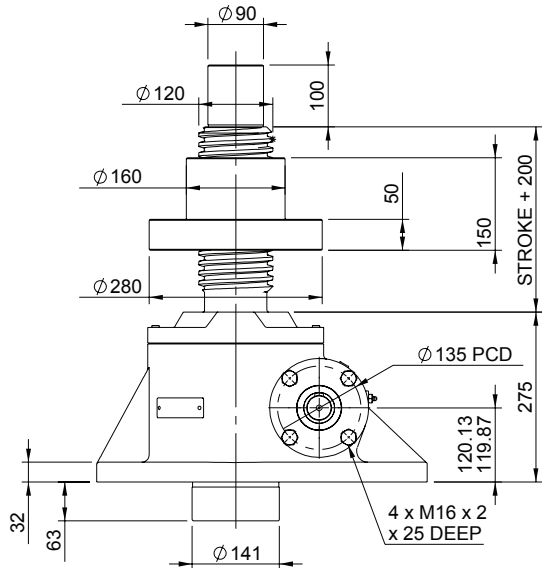
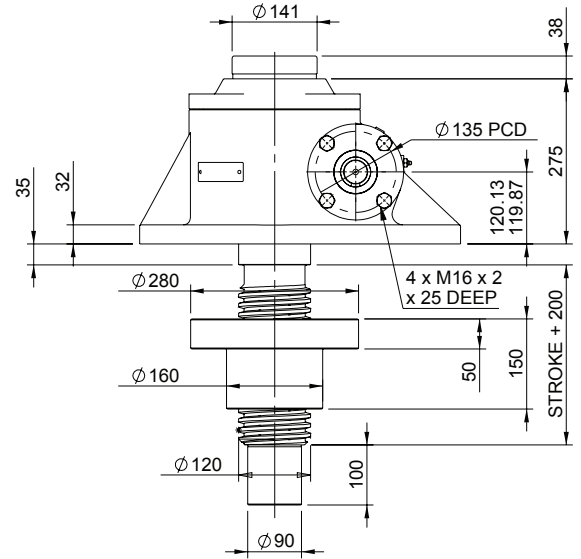
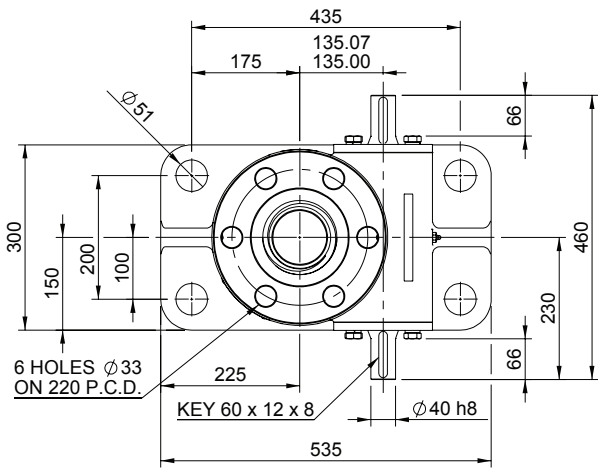
EMR0500-V00



Rotating Screw

Upright EMR0500-V00

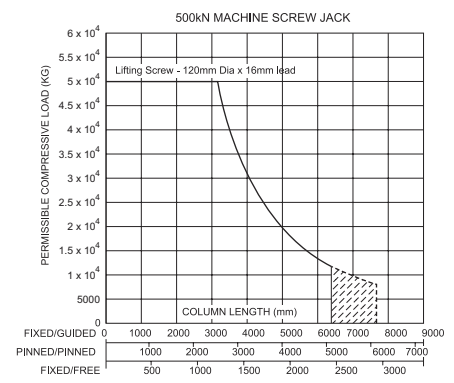
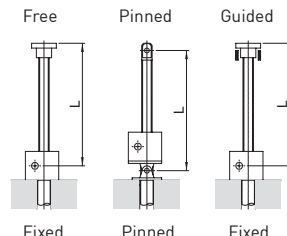
Inverted EMR0500-J00



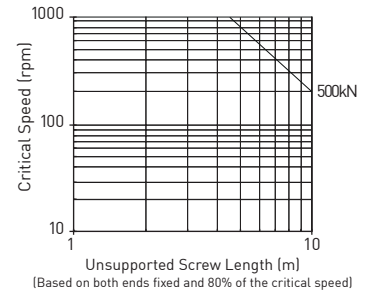
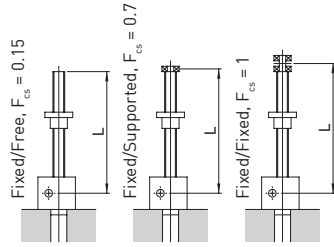
Performance

Column Strength

Model		EMT0500 EMR0500	
Capacity (kN)		500	
Sustaining Capacity (kN)	Standard 316 Lifting Screw	Tension	333
	Duplex Lifting Screw	Compression	500
Operating Capacity (kN)	Standard 316 Worm Shaft	167	
	Duplex or Plated Worm Shaft with 316 Screw	Tension	333
		Compression	500
Duplex or Plated Worm Shaft with Duplex Screw		500	
Lifting Screw	Diameter (mm)	120	
	Lead	Option	1
		mm	16
Gear Ratio Option 1	Gear Ratio	10 2/3:1	
	Screw Jack Static Efficiency	0.132	0.215
	Screw Jack Dynamic Efficiency	0.181	0.284
Gear Ratio Option 2	Gear Ratio	32:1	
	Screw Jack Static Efficiency	0.079	0.129
	Screw Jack Dynamic Efficiency	0.120	0.188



Critical Screw Speed



Note: All dimension in millimetres unless otherwise stated. Designs subject to change without notice